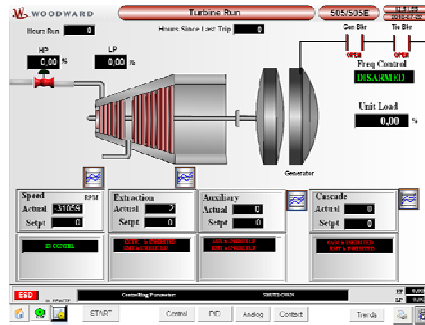


505View

Operator Interface Software for Woodward 505, 505E, & 505 Enhanced Controls

Applications

The 505View Operator Interface Software provides Human Machine Interface (HMI) capabilities for 505 and 505E steam turbine control systems. 505View software loads onto the user's PC which connects to the 505/505E control. 505View is designed for operator control and annunciation in either control room or local control applications. Integral remote access capabilities allow flexibility in a variety of applications. Alternatively, 505View may be loaded onto a laptop PC to be used by technicians and engineers only as needed.



Description

505View uses Intellution's powerful PC-based HMI engine to provide a graphical and intuitive interface for the 505 and 505E controls. The 505View software is unbundled from the computer hardware to provide the ultimate flexibility in application.

505View displays all parameters required for operation and service. An operator or engineer can graphically view operating inputs, vary control set points, issue Run Mode commands, and view trends and event logs of turbine and control parameters.

Either as a full-time operator station or a special-purpose tool, 505View exposes all of the power and flexibility of the 505 control.

Remote Access to 505View allows un-staffed sites or service-at-a-distance. These features are inherent with the Intellution HMI software provided with 505View.

505View software may run on any PC that meets the specified requirements, thus allowing a variety of packaging options. It can be installed on a permanent computer in a control room for true operator interface. Or it may be a rugged industrial touchscreen mounted on the turbine deck for local operation. Or it could be a laptop computer used by the instrumentation engineer for troubleshooting. The graphics are suitable for use with a touchscreen computer.

The 505View configuration is transparent to the user. It dynamically extracts the configuration parameters from the 505/505E control system and automatically exposes only the relevant functionality. No matter what the configuration of the 505/505E, no 505View configuration is required.

If the control is not configured to accept 505View interface commands, 505View functions as a system monitor only. Once the control is programmed to interface with the 505View operator interface, all Run Mode operations can be monitored and performed through 505View (start, stop, mode enable/disable, set point raise/lower). Using RS-422 or RS-485 communications, 505View can be located up to 1220 m (4000 ft) from the 505 control.

- 505 or 505E or 505 Enhanced Human Machine Interface
- For operator interface or troubleshooting
- Alarm/trip log with time tagging
- Graphic system control screens
- Displays all governor and turbine parameters
- Discrete and analog I/O screens for improved troubleshooting
- Automatic screen selection based on control configuration
- Remote access capability
- Real-time and historical trending

Features

505View is a standard, self-configuring, Intellution-based software package. It is pre-configured to communicate via Modbus®* protocol with either a 505 or 505E Woodward steam turbine control.

- Automatic screen generation based on control configuration
- Security with multiple password levels
- Remote access capability
- Real-time and historical trending
- Alarm/trip status indication
- Alarm/trip log with time tagging and first-out indication
- I/O and system troubleshooting
- Graphic system control screens
- Event status logging and history

Graphics screens include:

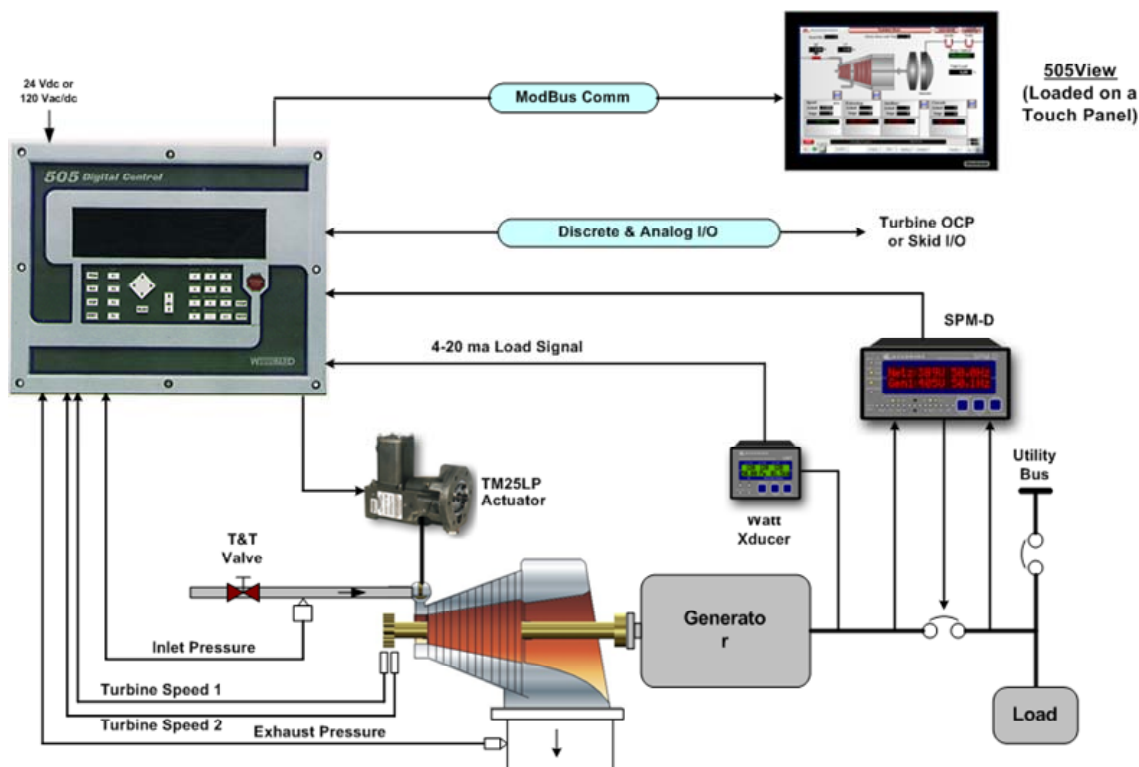
- All controlling parameters
- Starting sequence status
- Turbine related information
- Generator related information
- Speed, extraction, aux, cascade, and limiter information
- Analog input/output information
- Discrete input/output status
- System alarm & shutdown information

*—Modbus is a trademark of Schneider Automation Inc.

Technical Manual: 26648

Hardware Requirements

The computer should have a minimum of a Pentium 133 processor with Windows NT, 32 MB of RAM, 1 GB hard disk (for historical trend data storage), 2 MB Video RAM, CD-ROM, 1.44 MB floppy, 2 serial, 1 parallel, mouse, and keyboard. In addition, the monitor Display Properties should be set to the 800x600 resolution.



Typical Application of 505E with 505View

WOODWARD **Main Menu** **505/505E** 09:44:10
2010-07-20

Turbine Start	Analog In / Out	Alarm Summary
Turbine Run	Contact In / Out	Alarm History
PID Control	Trend Menu	Event Log
Turbine Control	Control ShutDown	
Extr / Adm Control	Auto Startup	

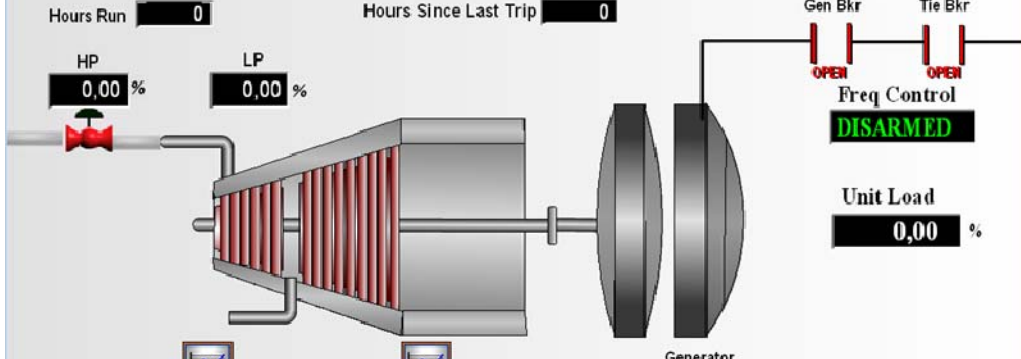
ESD IN LOCAL / IN REMOTE
Controlling Parameter: Remote / Speed SHUTDOWN
VI 7777 %
LP 7777 %

START Run Control PID Analog Contact ShutDown Trends

WOODWARD **Turbine Run** **505/505E** 12:51:55
2010-07-22

Hours Run 0 Hours Since Last Trip 0

HP 0,00 % LP 0,00 %



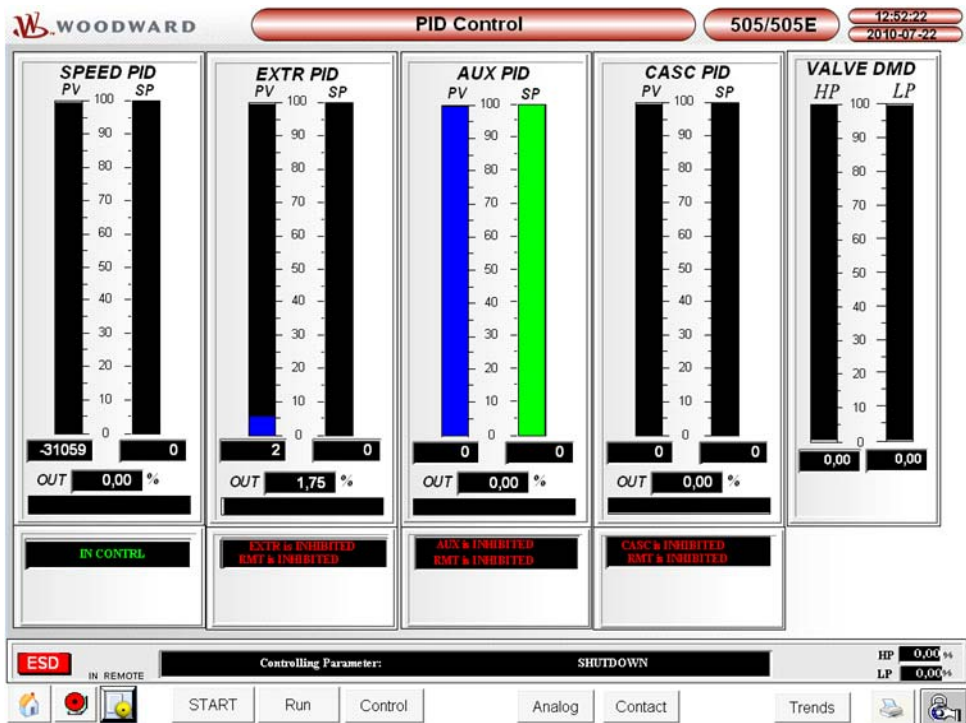
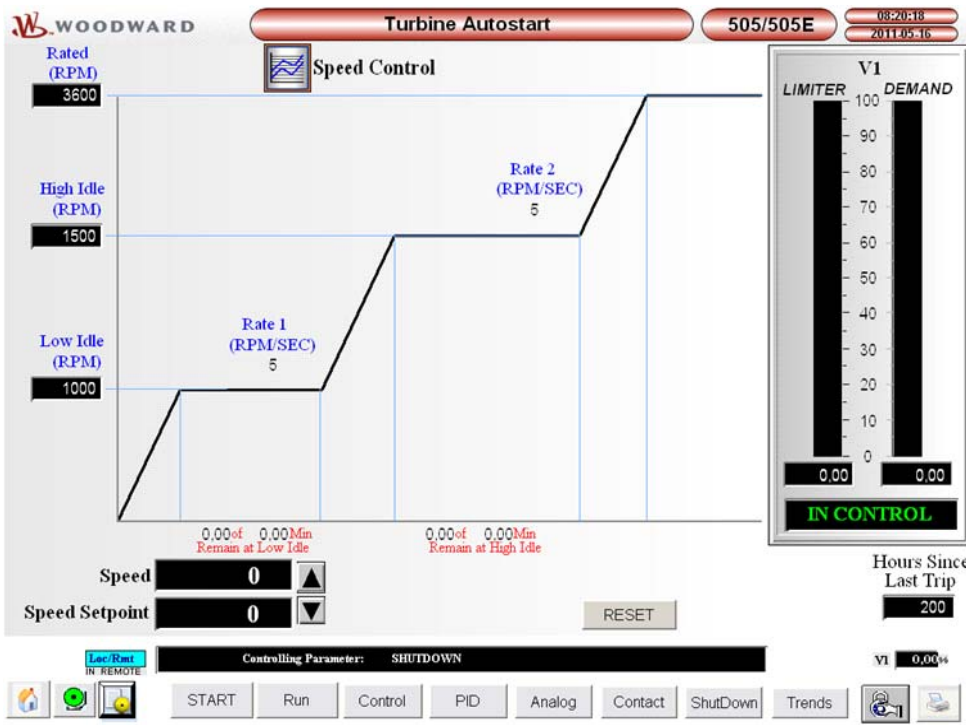
Gen Bkr OPEN Tie Bkr OPEN
Freq Control **DISARMED**
Unit Load 0,00 %

Speed RPM Actual -31059 Setpt 0	Extraction Actual 2 Setpt 0	Auxiliary Actual 0 Setpt 0	Cascade Actual 0 Setpt 0
IN CONTROL	EXTR & INHIBITED RMT & INHIBITED	AUX & INHIBITED RMT & INHIBITED	CASC & INHIBITED RMT & INHIBITED

ESD IN REMOTE
Controlling Parameter: SHUTDOWN
HP 0,00 %
LP 0,00 %

START Control PID Analog Contact Trends

Sample 505View Operator Interface Screens



PO Box 1519, Fort Collins CO, USA 80522-1519
 1000 East Drake Road, Fort Collins CO 80525
 Tel.: +1 (970) 482-5811 • Fax: +1 (970) 498-3058
www.woodward.com

Distributors & Service

Woodward has an international network of distributors and service facilities. For your nearest representative, call the Fort Collins plant or see the Worldwide Directory on our website.

This document is distributed for informational purposes only. It is not to be construed as creating or becoming part of any Woodward Governor Company contractual or warranty obligation unless expressly stated in a written sales contract.

Copyright © Woodward 1999–2012, All Rights Reserved

For more information contact: